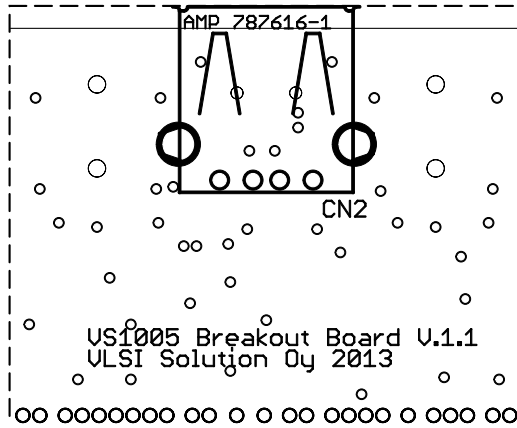


Basic connection to VSIDE.with RS232

# BOTTOM VIEW



AUX1 / LINE2_1	68	67	AUX0 / LINE2_2
MIC2P / AUX3 / LINE3_2	70	69	AUX2 / LINE1_3
MIC1P / LINE1_2	72	71	MIC2N / AUX4 / LINE3_1
AVDDRF	74	73	MIC1N / LINE1_1
RF_P	76	75	RF_N
RCAP	78	77	AGND
RIGHT	80	79	AVDDO
CBUF	82	81	NC
AVDDI	84	83	LEFT
USEN	86	85	USBP
PWM	88	87	GND_USB

Stereo line in : LINE1\_1 + LINE1\_2  
 Alternate stereo line in : LINE3\_1 + LINE3\_2  
 Alternate stereo line in : LINE2\_1 + LINE2\_2

GND	65	66	XTALI	2	1	XTALO
GND	68	67	XTALI	4	3	XTALO
PWRBTN	63	64	R1CVDD	6	5	AVDD
DBG	61	62	TEST	8	7	IOVDD
US_OUT / GPIO0_15	59	60	CVDD3	10	9	IOVDD
SPDIF_OUT / GPIO0_13	57	58	US_IN / GPIO0_14	12	11	NFDIO0 / GPIO0_0
DIA2/ETH_TXN/GPIO2_13	55	56	GPIO0_12 / SPDIF IN	14	13	NFDIO2 / GPIO0_2
DIA1/ETH_TXP/GPIO2_12	53	54	IOVDD3	16	15	NFDIO4 / GPIO0_4
DIA3/ETH_RXP/GPIO2_11	51	52	GPIO1_15 / EDC	18	17	NFDIO6 / GPIO0_6
SD_DAT3 / GPIO2_9	49	50	SD_CMD / GPIO2_10	20	19	NFRDY / GPIO0_8
SD_DAT1 / GPIO2_7	47	48	SD_DAT2 / GPIO2_8	22	21	XCS1 / GPIO1_4
SD_CLK / GPIO2_5	45	46	SD_DAT0 / GPIO2_6	24	23	CVDD1
GND	43	44	SD_CMD	26	25	GND
GND	41	42	SD_DAT1	28	27	GND
I2S_BCK / GPIO1_12	43	44	I2S_12M / GPIO1_14	30	29	GND
I2S_DI / GPIO1_10	41	42	I2S_FRM / GPIO1_13	32	31	GND
RX / GPIO1_8	39	40	I2S_DO / GPIO1_11	34	33	GND
DBGREQ / GPIO2_4	37	38	TX / GPIO1_9	36	35	GND
TDO / GPIO2_2	35	36	CVDD2	38	37	GND
TMS / GPIO2_0	33	34	TCK / GPIO2_3 \ DIO	40	39	GND
MISO0 / GPIO1_2	31	32	TDI / GPIO2_1 \ DRO	42	41	GND
XCS0 / GPIO1_0	29	30	MOSI0 / GPIO1_3	44	43	GND
MOSI1 / GPIO1_7	27	28	SCLK0 / GPIO1_1	46	45	GND
	25	26	NFCE / GPIO1_11	48	47	GND
	23	24	NFWR / GPIO0_10	50	49	GND

Connect pin9 and GND for normal operation.

## VLSI USB to serial port cable

- GND (black)
- +5V (red)
- RX (yellow or white)
- TX (green)

- DIA1 - Digital AD1 input
- DIA2 - Digital AD2 input
- DIA3 - Digital AD3 input
- EDC - External AD/DA clk
- DRO - Digital Right output
- DLO - Digital Left output