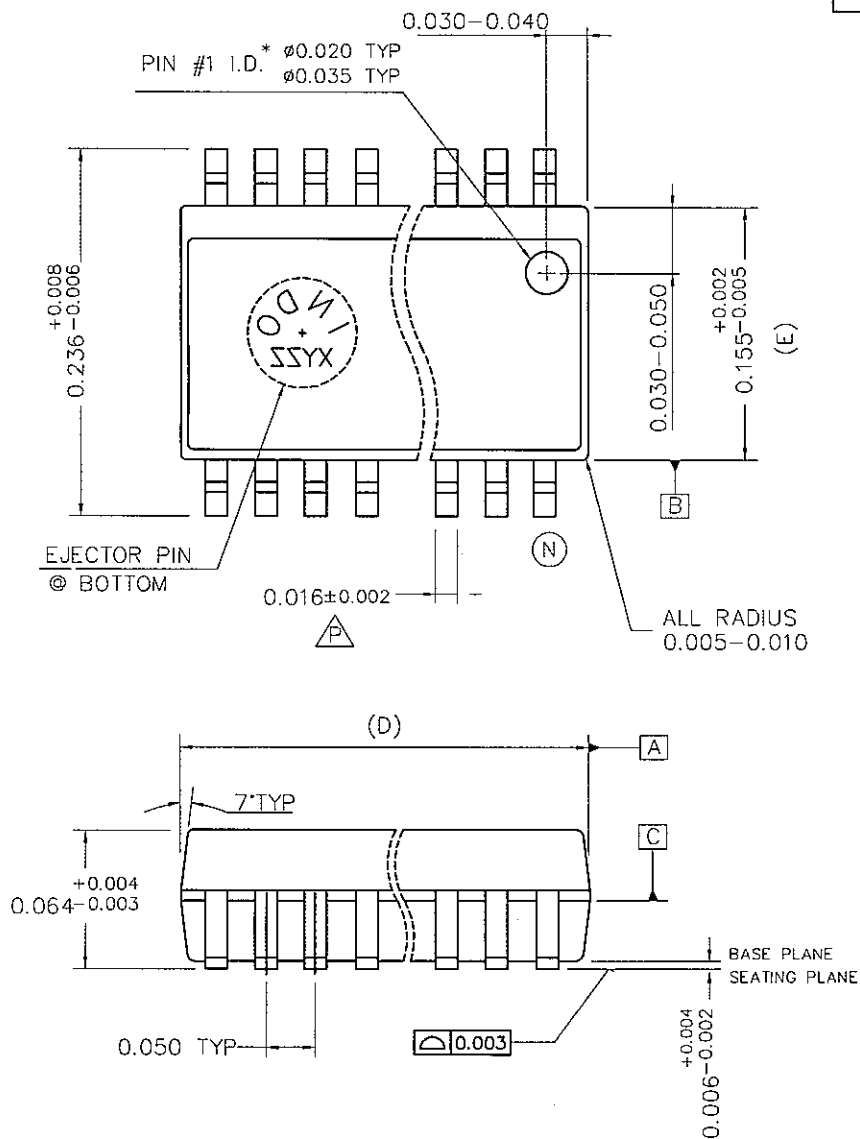
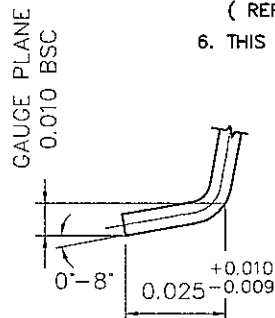


REV	DESCRIPTION	DATE	BY	REV	DESCRIPTION	DATE	BY
M	UPDATE FOOT LENGTH MEASUREMENT METHOD	04SEPT05	AGUS S/PE	J	CHANGE FR .035/.045 & FR .045/.055 CHANGE PIN 1 DIA FR #.045 & ADD #.020 TYP	07FEB01	ANANG/PD
N	CHANGE COMPANY NAME & LOGO REMOVE "GULL WING" FROM TITLE UPDATE 16L VARIATION	13JUN08	AGUS S/PE	K	UPDATE TABLE, REMOVE CONVENTIONAL MOLD COLUMN	29APR03	HANIF/PE
P	CHANGE LEAD WIDTH FROM 0.016+0.004/-0.002 TO 0.016±0.002	12JUL10	AA.MURTADA/PE	L	UPDATE TABLE, REMOVE MGP MOLD FOR 08N SOIC STANDARD LEAD FRAME	01JUL04	SUHANA/PE



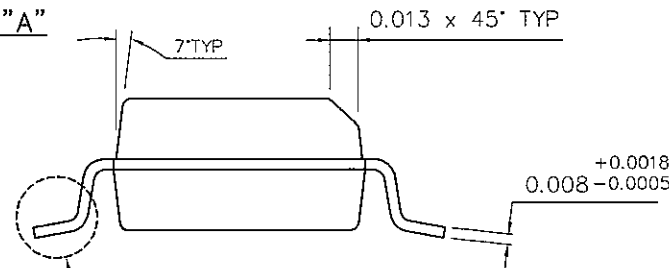
NOTES:

- "D" & "E" ARE REFERENCE DATUMS AND DO NOT INCLUDE MOLD FLASH OR PROTRUSION. MOLD FLASH OR PROTRUSION SHALL NOT EXCEED 6 MILS PER SIDE.
- "N" IS THE NUMBER OF TERMINAL POSITIONS.
- FORMED LEADS SHALL BE PLANAR WITH RESPECT TO ONE ANOTHER WITHIN 3 MILS (@ SEATING PLANE) OUTGOING ASSEMBLY & 4 MILS AFTER TEST.
- THE BOTTOM PACKAGE LEAD SIDE MAY BE BIGGER THAN THE TOP PACKAGE LEAD SIDE BY 4 MILS (2 MILS PER SIDE). BOTTOM PACKAGE DIMENSION SHALL FOLLOW DIMENSION STATED IN THIS DRAWING.
- THE BOTTOM EJECTOR PIN CONTAINS COUNTRY OF ORIGIN "INDO" AND MOLD ID. (REFER TO TABLE FOR OPTION).
- THIS DRAWING CONFORMS TO JEDEC REF. MS-012 REV. E



N	D VARIATION			MGP MOLD			
	MIN	NOM	MAX	STANDARD	MATRIX	PIN 1 I.D.	EJECT PIN
08	0.189	0.193	0.196	N/A	YES	YES	YES
14	0.337	0.339	0.344	YES	NO	YES	YES
16	0.386	0.390	0.393	N/A	YES	YES	YES

Detail "A"



See Detail "A"

PROJECTION	UNIT	TITLE	
	INCH	FINISHED PACKAGE OUTLINE DRAWING 150 MILS BODY SOIC	
APPROVAL	DATE	DRAWING NO.	
AA.MURTADA	12JUL10	DG 3999	
DRAWN	CHECKED	REV.	
AGUS S.	12/1/10	P	
APPROVED	RELEASED	SCALE	SHEET
MUSTAMIR	DOCON	DO NOT SCALE	1 OF 1

Jalan S. Parman Kav. 201
Batamindo Industrial Park, Muka Kuning
Batam Island 29433, Indonesia
Telp: (62)-770-611888 Fax: (62)-770-611555