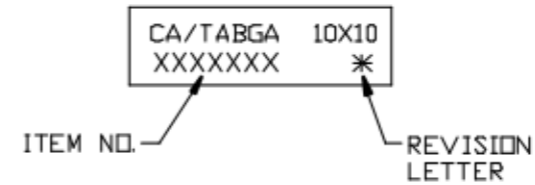
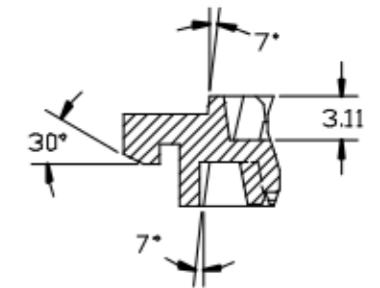


TRAY STACKING DETAIL  
SCALE: 3/1

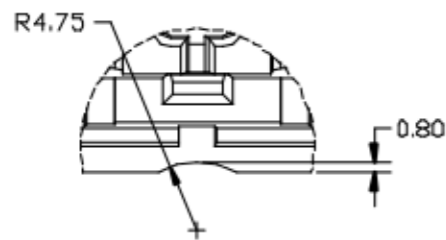


DETAIL "G"

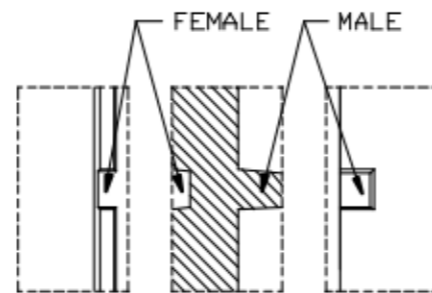


DETAIL "H"  
SCALE: 4/1

2. CELL COUNT IS 8 X 21 = 168  
<NOTE> 1. CONFORM TO EIA-541



DETAIL "C"  
SCALE: 4/1



SLIP-LOCK DETAILS  
DETAIL "D"  
SCALE: 4/1

BAKEABLE	MPPD	BLACK	150°C MAX	12C-1010-E19
DESCRIPTION	MATERIAL	COLOR	TEMP °C	PART NO. ITEM NO.

LFGA88 (10x10 mm), Mechanical drawing of tray.  
Date: 17.9.2001.  
JEDEC L/P CA/TABGA 10x10mm BODY.